

# There's more than one way to fit Dermacol

It's important to keep trying with Dermacol until you *find the perfect fit*. So if you've tried one method and it hasn't worked for you, why not try another – or ask your stoma care nurse for help. *Whatever you choose, Dermacol comes away easily with the pouch or flange, on removal.*

*If you think you may have ordered the incorrect size, simply contact us and request the next size larger/smaller.*

**FREEPHONE  
0800 626388 (UK)**

**FREEPHONE  
1-800 408508 (IRELAND)**



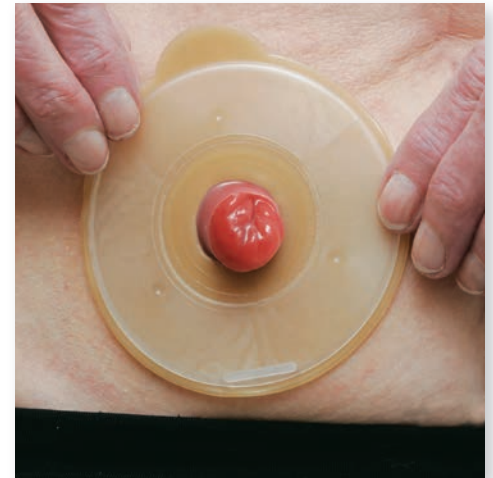
Attach the Dermacol to your skin first, then put the pouch on in the usual way.



Attach the Dermacol to your pouch first, then fit both onto the stoma.



(for two-piece users)



Attach the Dermacol to your flange first, then fit both onto the stoma.